

**COMM1790**

**Design  
Portfolio**

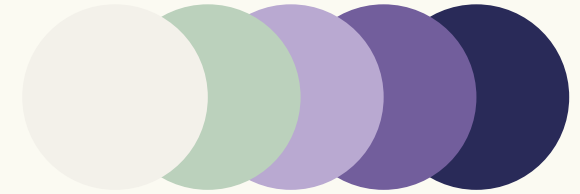


**Student number: 201866367**



# *1A*

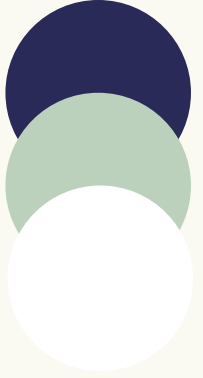
*Design  
Portfolio.*



# CONTENTS



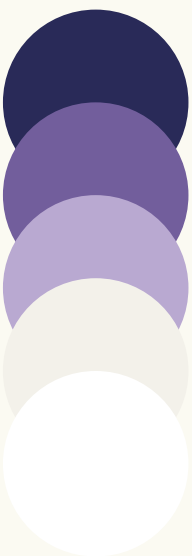
- brand identity
  - the logo
- logo versions
  - usage
  - colour
- typography



# brand identity

Kute K9S is a professional pet service located in Rawdon, providing comprehensive offerings such as dog walking, cat sitting, and home boarding, all backed by NARP registration and full insurance coverage.





Abstract,  
using "P" letter  
and decorative elements

Complex design with multiple elements,  
harder to recognize

Formal,  
luxurious, less approachable

Elegant, high-end feel,  
but less connected to pet services

Complicated colors and design,  
less attention-grabbing

Theme Expression

Visual Simplicity

Approachability

Professionalism

Attractiveness



Direct,  
using dog and cat silhouettes to show  
how pet services

Simple circular design,  
easy to recognize

Warm and friendly,  
more relatable to pet service audience

Modern and professional,  
directly reflects pet services

Clean, contrasting colors,  
visually appealing

- Compared to the previous versions, I wanted to design a simple, warm, and professional logo for a pet services brand that effectively conveys its core message and values while enhancing visibility and memorability.

# the logo



Format: SVG

Software: Illustrator

# the logo



This logo necessitates a minimum 'isolation area' of 0.4 cm (0.15 inch) on all sides to ensure clarity and prevent visual interference from adjacent elements. This space may be increased but must not fall below the specified minimum to uphold design integrity. Furthermore, the logo should have a height of at least 2 cm (0.8 inch) to guarantee easy readability of the text ("Kute K9S") and clear identification of the dog and cat imagery, even at reduced sizes. These guidelines are essential for maintaining visibility, readability, and overall effectiveness across various applications.

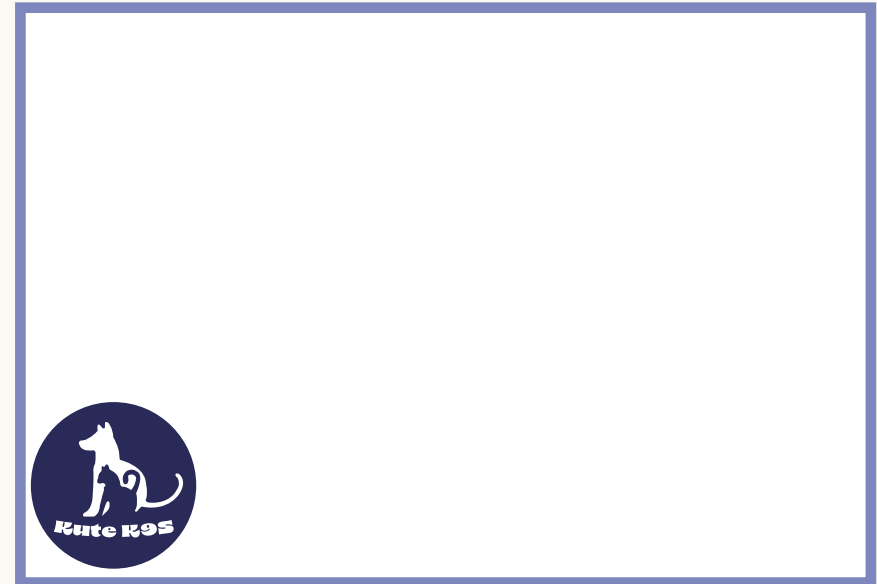
# logo versions



The logo has been meticulously designed for monochromatic printing when color reproduction is not feasible. Two alternative 'flat' or 'silhouetted' versions have been developed: one for white backgrounds and the other for black backgrounds. These adaptations adhere to the same minimum height and isolation area specifications to ensure consistent visibility and legibility.

# logo positioning

In all instances of logo publication, it is recommended that the logo be positioned in the top left corner of any document in which it is utilized, maintaining a minimum distance of 10mm from any edge to adhere to the established minimum boundary. When it is scaled up it also works aligned to the centre.



# usage



No removing the background shape.



No changing the background shape.



No changing the colour.



No visual effects.



No distorting the logo.



No add a border around the logo.

# colour

The logo of Union Interior Design employs a restrained color palette, utilizing exclusively white and purple. The strategic application of this particular shade of purple is intended to convey a professional, distinctive, and intimate image within a highly competitive market, thereby enhancing brand recognition.



Digital: RGB(45,29,100)  
Print: CMYK(96,100,51,6)



Pure white

# typography

Kute K9S uses the '8 Heavy' font throughout its branding and under no circumstances should that be substituted in the logo.

**8 Heavy 1234567890**

**!''£\$%^&\*()<>|\,.'`#;**

**qwertyuiopasdfghjklzxcvbnm**

**QWERTYUIOPASDFGHJKLZXCVB**

**NM**

*Design for  
1B  
Social  
Change*

# Digital Legacy: Reborn from the Ashes

## Context

A fire at the Brazilian National Museum on September 2, 2018, destroyed about 90% of its artifacts and severely damaged the building. (Natural History Museum, 2019)

One of the largest museums in Latin America



**18M+**

The artefacts have been destroyed in the fire



**13K m<sup>2</sup>**

including 122 rooms are burned

(Natural History Museum, 2019)

**92.5%**  
Destroyed

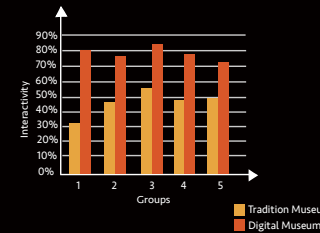


**5%**  
Left

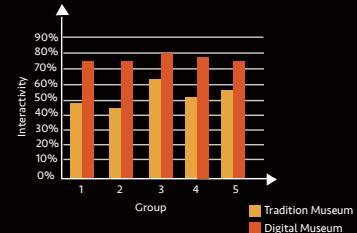


## Acceptance of the Crowd

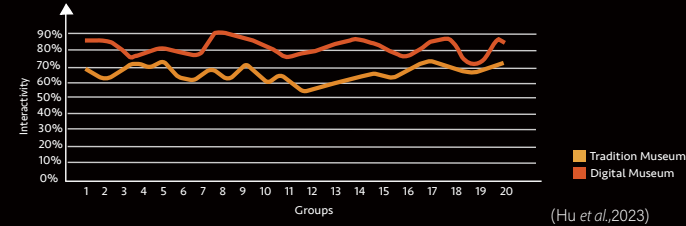
**Interactivity** of museums from the perspective of young people



**Amusement** of museums from the perspective of young people



**Richness** of museum content from the perspective of young people



(Hu et al., 2023)

## Historical



**2000s**  
3D scanning technology applied in museums.



**2020s**  
Blockchain and NFT technology used for digital artifact certification and protection.

**Late 20th Century**  
Began using digital images to archive cultural relics.



**2010s**  
Rise of virtual museums, online exhibitions, and AR/VR tours.



## Technological process



Preserve Artefacts In Advance is extremely important.



Wikipedia @Wikipedia · Sep 4, 2018

There were over 20 million objects inside the #MuseuNacional. Did you take a photo of any of them? Help us preserve the memories of as many as we can and add them to @wikicommons.

Wikipedia asked for help on twitter

### Photogrammetry

Brazilian Natona museum aims to create three-dimensional models from various perspectives using photographic measurements taken by visitors.

(Natural History Museum, 2019)

Some digital artifacts downloaded from digital museums

(Smithsonian Institution, n.d.)  
(Palace Museum, n.d.)



### Technical Specifications:

Size: web  
Width: 1280px  
Height: 1024 px  
Color Mode: RGB  
Resolution: 72DPI

# The utilization of digital museums by nations

In recent years, many countries have undertaken significant digitalization efforts to preserve and disseminate their cultural heritage.



*the Evaluation of Digital Museum by the Audience*

## Smithsonian Institution's Open Access Digital Initiative in the United States

The Smithsonian Institution's Open Access initiative offers free access to over 2.8 million digital assets across various disciplines, allowing unrestricted use under a Creative Commons Zero license. (Smithsonian Institution, n.d.)



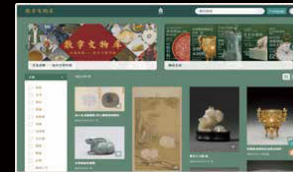
## Virtual Archaeology at Pompeii in Italy

Pompeii's virtual archaeology project employs 3D modeling and VR to recreate the ancient city, enabling exploration of its pre-eruption environment through advanced mapping technologies.

*(The Geographical Cure, 2020)*



## The Palace Museum of China



China's Palace Museum has developed a comprehensive digital archive that includes high-resolution images, 3D models, and virtual exhibitions, greatly enhancing the protection and access (Palace Museum, n.d.)



## Digital Dunhuang of China

The project, which began in the 1990s, aims to digitize the murals, grottoes, and sculptures of the cultural heritage site of Dunhuang Mogao Grottoes. Currently, there is a vast amount of digital cultural resources available.

*(Dunhuang Academy, n.d.)*

**78** countries  
**15.6M+** have been visited

*The data has been updated to July 2022. (Dunhuang Academy, n.d.)*

## The Louvre Museum in France

VR

AR

Le Louvre Museum provides a comprehensive virtual experience with access to over 480,000 artworks through interactive tools and an expanding online collection.

*(Lamb, 2020)*



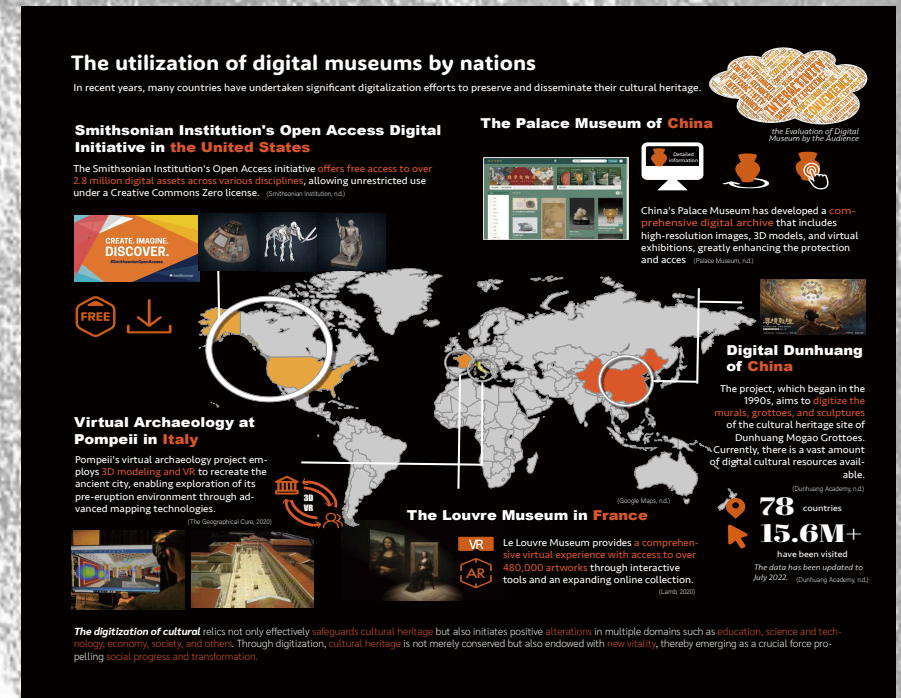
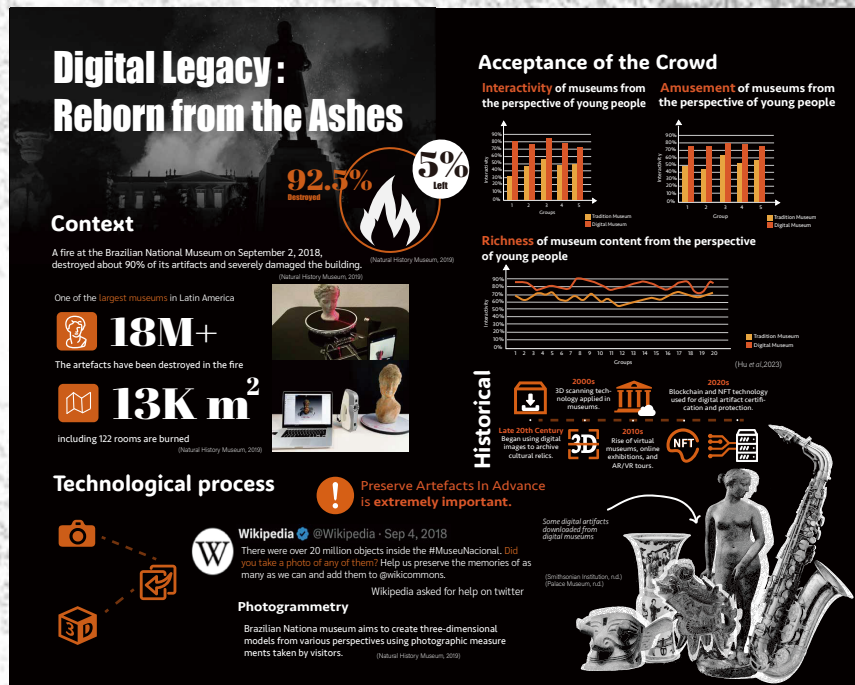
The digitization of cultural relics not only effectively safeguards cultural heritage but also initiates positive alterations in multiple domains such as education, science and technology, economy, society, and others. Through digitization, cultural heritage is not merely conserved but also endowed with new vitality, thereby emerging as a crucial force propelling social progress and transformation.

### Technical Specifications:

- Size: web
- Width: 1280px
- Height: 1024 px
- Color Mode: RGB
- Resolution: 72DPI

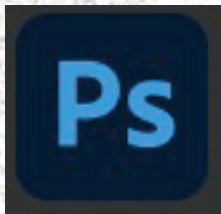
# Project Overview

- In this digital design and infographic project, I chose the theme of preserving cultural heritage through digital means. The goal was to emphasize the importance of protecting cultural artifacts, especially in the context of disasters like the 2018 fire at the Brazilian National Museum, and how digital technologies help preserve and share our history. This project is not just about the protection of cultural heritage but also about driving social change. It shows how technology can break down geographical and temporal barriers, enabling more people to access and understand cultural heritage equally.

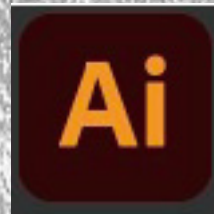


- In the design process, I used vector graphics, digital images, and typography to convey the message. The infographic presents key milestones in the digital preservation of cultural heritage and emphasizes the impact of digitization on artifact protection. I also included comparative tables to highlight the differences in interaction between traditional and digital museums, showcasing how digital technology is changing the museum experience for younger generations. My design style is clean and modern, with clear typography and minimalist imagery to ensure the information is easy to understand. The color palette combines traditional elements with innovative touches, reflecting the fusion of heritage and modernity. Through a minimalist approach, I ensured the focus remains on the key message, while the timeline and comparative elements in the design further emphasize how digital technology is driving the spread of cultural education and social change, making global cultural heritage more accessible and protectable.

## **I use**



**Adobe Photoshop:**  
Image Processing And Editing  
Color Adjustment



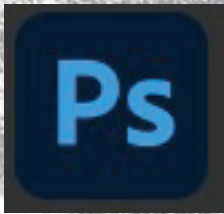
**Adobe Illustrator:**  
Vector Graphic Design  
Typography and Font Design  
Graphic and Icon Design



## Image Adjustment and Color Processing Specifications:



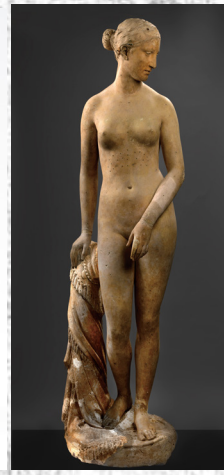
I adjusted the colors of the images using tools like "Hue/Saturation" and "Brightness/Contrast" to ensure a cohesive color palette that matched the theme of the project. Additionally, I enhanced the exposure and shadows of some images to make them stand out against the dark background.



# Image Adjustment and Color Processing Specifications:



For elements like the sculptures and artifacts, I used the Quick Selection Tool and Layer Masks to precisely remove their backgrounds. I also used the Pen Tool to refine the edges, ensuring that the cutouts looked clean and natural.





## Vectorized image:



In the map of this assignment, I used Adobe Illustrator. I first utilized the Image Trace function to convert it into a vector graphic. And selected the appropriate preset to retain the basic colors of the map. Adjusted the settings of threshold, path, angle, and noise in the Image Trace panel to ensure that the lines of the map were clean and the details were appropriate. Then, clicked Expand to transform it into editable vector shapes, used the Direct Selection tool to optimize the anchor points and shapes, and finally adjusted the colors and details to complete the vectorization.



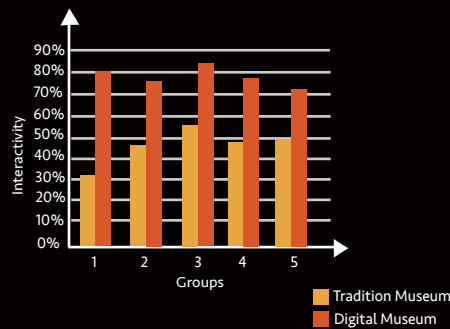
# Icon production :



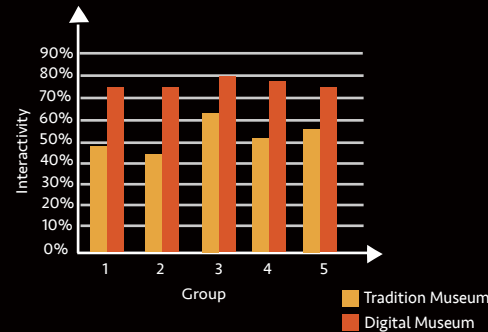


# Data graph making :

### Interactivity of museums from the perspective of young people

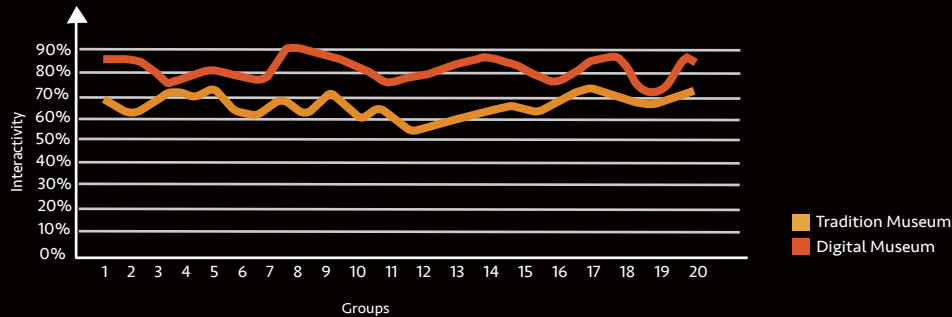


### Amusement of museums from the perspective of young people



*the Evaluation of Digital Museum by the Audience*

### Richness of museum content from the perspective of young people



I used Adobe Illustrator to visualize some data. This makes the data more intuitive for the reader.

# *Speculative Futures*

# Project Overview

The "Flow Molecular Vehicle" is a speculative concept designed for the year 2100, powered by hydrogen and capable of seamlessly navigating both land and water. Inspired by fluid dynamics and nature, this vehicle addresses the challenges of sustainability and energy efficiency. It combines sleek, aerodynamic design with autonomous driving technology, reflecting my vision of a future society where innovation and eco-conscious mobility coexist harmoniously.



## Background

flow molecular car



**Technical Specifications:**  
**Size:** UHDTV/4K 2160p  
**Width:** 3840 px  
**Height:** 2160 px  
**Color Mode:** RGB  
**Resolution:** 72DPI

# Ai generates descriptors



keyword:

Futuristic cityscape, Floating spheres  
, Advanced architecture, Sci-fi  
skyline, Large spherical structures,  
Greenery and nature, People walking  
, Dramatic lighting, Futuristic  
transportation systems

keyword:

Futuristic cityscape, Floating spheres  
, Advanced architecture, Sci-fi  
skyline, Large spherical structures,  
Greenery and nature, People walking  
, Dramatic lighting, Futuristic  
transportation systems



# Project Overview

sketch

MIMV

MOBILE MOLECULAR VEHICLE



In my design, the "Flow Molecular Vehicle" features smooth, flowing lines and transparent materials, emphasizing its ability to transition effortlessly between environments. The cockpit is equipped with holographic displays and autonomous systems, illustrating the integration of AI with human interaction. The design meets Ultra HD broadcast standards, ensuring fine details and visual impact are clearly conveyed, showcasing the fusion of technology, sustainability, and futuristic aesthetics.

# sketch

# MIMV

MOBILE MOLECULAR VEHICLE

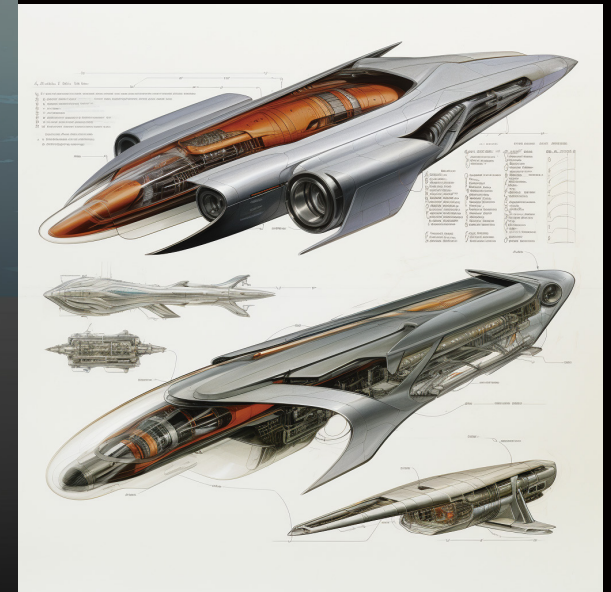


**Technical Specifications:**  
Size: UHDTV/4K 2160p  
Width: 3840 px  
Height: 2160 px  
Color Mode: RGB  
Resolution: 72DPI

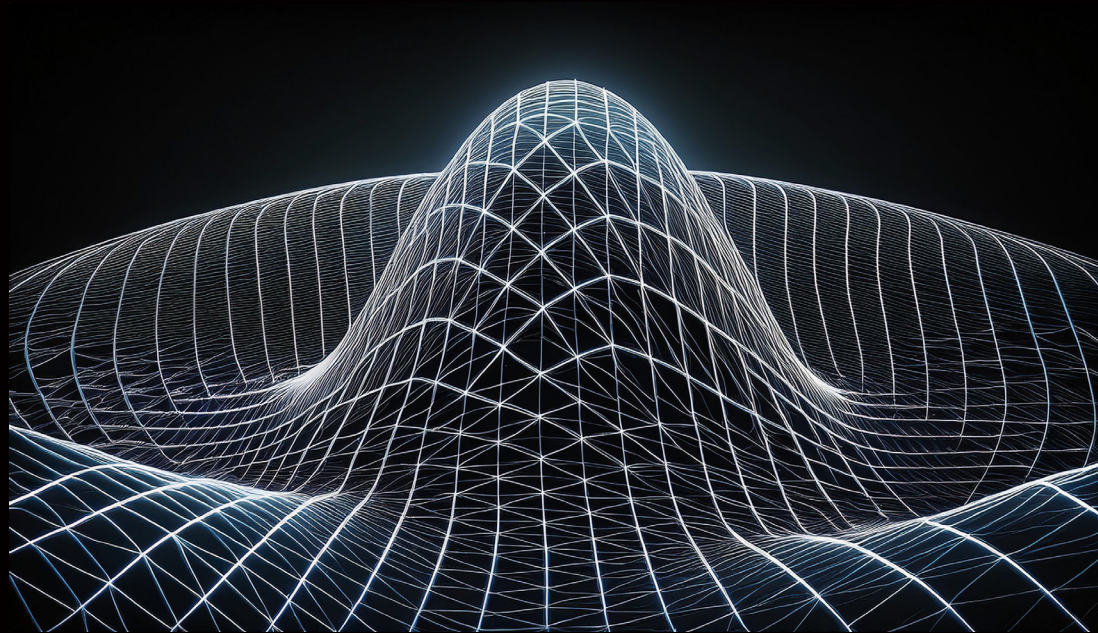
# Ai generates descriptors

keyword:

Futuristic cityscape, Floating spheres, Advanced architecture, Sci-fi skyline, Large spherical structures, Greenery and nature, People walking, Dramatic lighting, Futuristic transportation systems



# **Ai generates descriptors**



keyword:

Fluorescent color, grid black bottom draft

# Project Overview



## operation control board

In my design, the fluid dynamic molecular vehicle is controlled by the smart bracelet worn by the user. This bracelet enables the driver to interact with the vehicle, easily select the driving mode (land, water, air) and adjust the direction, speed and other settings through gestures. The bracelet displays the vehicle's status information in real time, such as battery power, speed and mode, ensuring that the driver is always aware of the vehicle's condition. The seamless connection between the bracelet and the vehicle enables the driver to conveniently control and switch the driving mode in any environment.



**Technical Specifications:**  
Size: UHDTV/4K 2160p  
Width: 3840 px  
Height: 2160 px  
Color Mode: RGB  
Resolution: 72DPI

# Ai generates descriptors



keyword:

Futuristic flying car, Cyberpunk city, Neon lights, Sleek aerodynamic design, Glowing engine thrusters, Night city reflections, High-tech vehicle, Rainy streets, Sci-fi vehicle in motion, Urban landscape at night

keyword:

Futuristic amphibious vehicle, sleek design, city canal, sunset lighting, urban skyline, high-tech transportation, neon reflections, modern cityscape, smooth water surface, glowing vehicle details, futuristic infrastructure, advanced transportation system.



# Ai generates descriptors

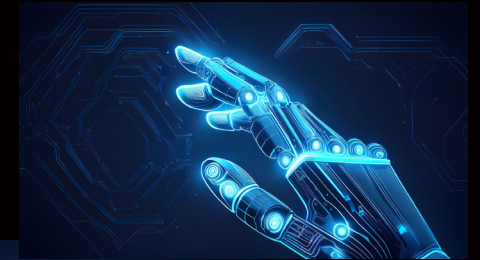


keyword:

Futuristic amphibious vehicle, sleek design, city canal, sunset lighting, urban skyline, high-tech transportation, neon reflections, modern cityscape, smooth water surface, glowing vehicle details, futuristic infrastructure, advanced transportation system.

keyword:

Futuristic robotic hand, glowing blue lines, tech sketch, circuit board background, mechanical arm, digital illustration, sci-fi design, neon glow, cybernetic hand, high-tech interface, futuristic technology.



# Cockpit display



**Technical Specifications:**  
Size: UHDTV/4K 2160p  
Width: 3840 px  
Height: 2160 px  
Color Mode: RGB  
Resolution: 72DPI

# Ai generates descriptors



keyword:

Futuristic car dashboard, holographic interface, digital display, transparent design, advanced technology, illuminated controls, sleek interior, high-tech vehicle, smart dashboard, neon lighting, sci-fi vehicle interior, modern car cockpit.



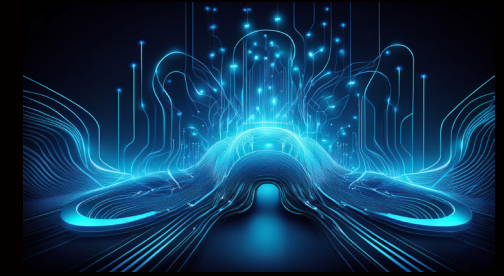
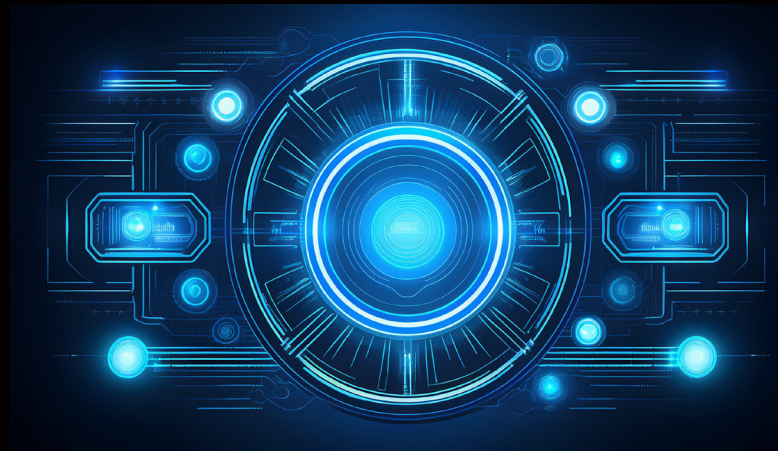
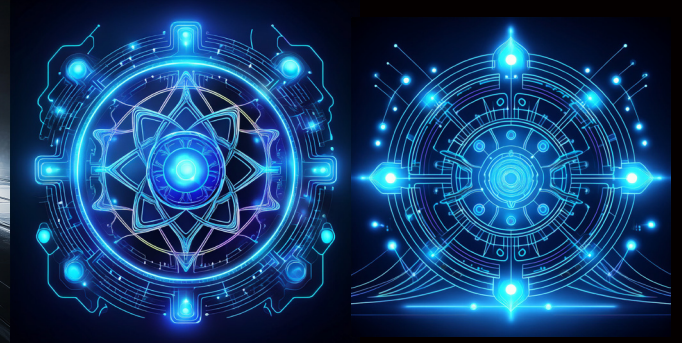
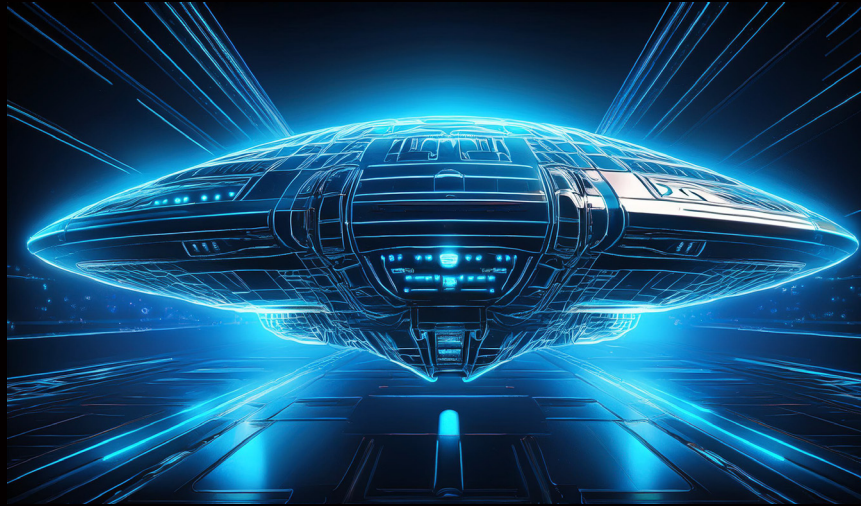
# Project Overview

Finally, I designed a picture that combines the sense of future technology and the atmosphere of doomsday, showing the operation of the fluid power molecular vehicle in an environment full of high-tech elements. Through the exquisite streamlined design and luminous digital panels, the picture prominently showcases the advanced technology and intelligent system of the vehicle. The background is a dilapidated doomsday world. Through the neon blue light, it forms a sharp contrast with the vehicle, creating an atmosphere where the future and technology are intertwined, reflecting the coexistence of technology and sustainability in extreme environments.



**Technical Specifications:**  
Size: UHDTV/4K 2160p  
Width: 3840 px  
Height: 2160 px  
Color Mode: RGB  
Resolution: 72DPI

# Ai generates descriptors

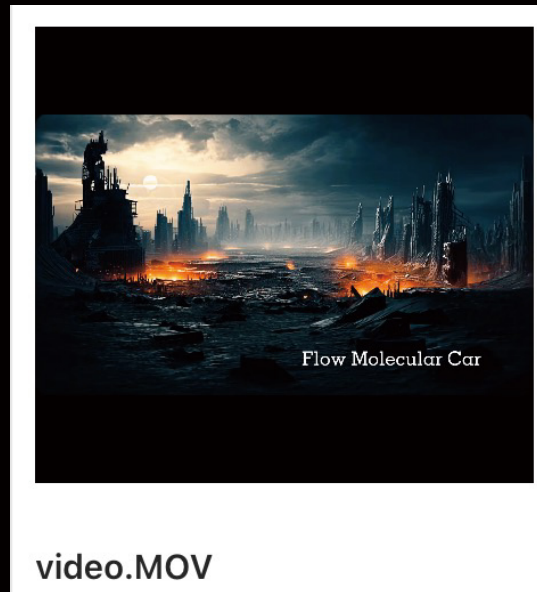


## **summary**

Among these works, I used AI technology to generate multiple images and adjusted and spliced them through Adobe Photoshop to achieve the visual effect I wanted. First of all, I generated futuristic fluid dynamic molecular vehicles, cockpits, and related sci-fi background images through AI. These images provided rich visual elements for my design. I used Photoshop to skillfully splice these images together, adjusting their tones, lights, and details to ensure the harmonious integration of each element. In addition, I also used Adobe AI tools to draw an appropriate amount of icons and added intelligent interfaces and interactive elements to these designs.

# video

I made these manipulated images into GIFs and edited these GIFs into videos.



Browse by connection:  
<https://vm.tiktok.com/ZGdrQYAh5/>

The background is a traditional Chinese painting depicting a palace interior. In the upper center, two women are reclining on a platform, one holding a book. To the left, a woman stands on a balcony with another. In the foreground, several women are engaged in various activities: some are kneeling, some are standing, and one is walking down a set of stairs on the right. The architecture features ornate railings and pillars. The overall style is characteristic of classical Chinese ink and wash painting.

# ***10***

# ***Multiformat Campaign***

# Project Overview

Event Name: Garden Of Time  
City: Yangzhou, China

The *Garden Of Time* is a unique festival celebrating the poetic elegance of Yangzhou, a city renowned for its classical gardens, rich cultural heritage, and culinary traditions. This immersive event invites participants to experience the refined lifestyle of ancient China through a blend of art, cuisine, music, and interactive cultural activities. The festival merges the cultural identity of Yangzhou with a modern, globally accessible design language to appeal to both local and international audiences.

# THE LOGO



LOGO



Symbol

GARDEN OF TIME  
時光宴 · 山水間



Logotype



GARDEN OF TIME  
時光宴 · 山水間



GARDEN OF TIME  
時光宴 · 山水間

Format: SVG  
Software: Illustrator

# Basic Logo Color

#A18159  
RGB(161,129,89)  
CMYK(44,51,68,0)

#000000  
RGB(0,0,0)  
CMYK(100,100,100,100)

#4D5059  
RGB(77,80,89)  
CMYK(76,68,57,16)

#21242D  
RGB(33,36,45)  
CMYK(86,82,69,52)

#5E3119  
RGB(94,49,25)  
CMYK(57,81,97,41)

#B8292D  
RGB(184,41,45)  
CMYK(30,96,89,0)

#2C3D1D  
RGB(44,61,29)  
CMYK(80,64,100,45)

#5F7447  
RGB(95,116,71)  
CMYK(69,48,83,6)

GARDEN OF TIME  
时光宴·山水间

GARDEN OF TIME  
时光宴·山水间

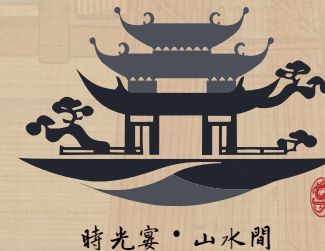
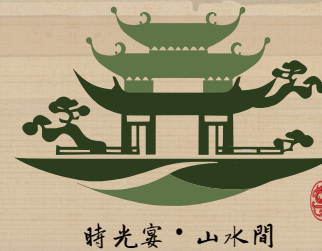
GARDEN OF TIME  
时光宴·山水间



# LOGO specification



Chinese



English



Chinese  
+  
English

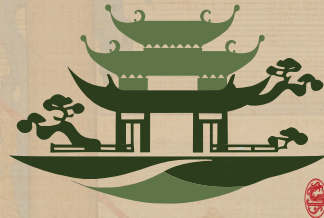


In the *Garden of Time* event, the inclusion of both Chinese and English versions in the logo guidelines is to accommodate different cultural contexts and audience needs.

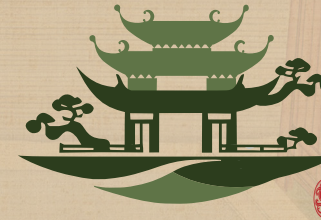
# LOGO specification



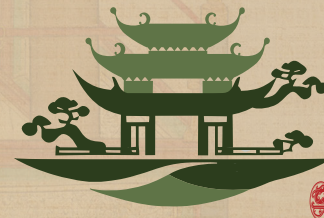
Chinese  
+  
English



時光宴·山水間  
GARDEN OF TIME



Garden of Time  
A Chinese Ancient Banquet Experience  
時光宴·山水間



GARDEN OF TIME  
時光宴·山水間

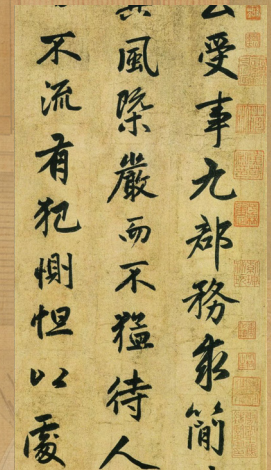
In order to adapt to different sizes, the above three different text compositions can be used in different promotions.

# LOGO typography



GARDEN OF TIME uses the 'Adobe Song Std L' and 'SentyZHAO' font throughout its branding and under no circumstances should that be substituted in the logo.

Among them, 'SentyZHAO' can be used both in English and Chinese. It uses the handwritten font of Zhao Mengfu, an ancient Chinese calligrapher, which is more in line with the brand characteristics.



Adobe Song Std L  
1234567890

!"£\$%^&\*()<>|.,' #;

qwertyuiopasdfghjklzxcvbnm  
QWERTYUIOPASDFGHJKLZ  
XCVBNM

SentyZHAO

1234567890

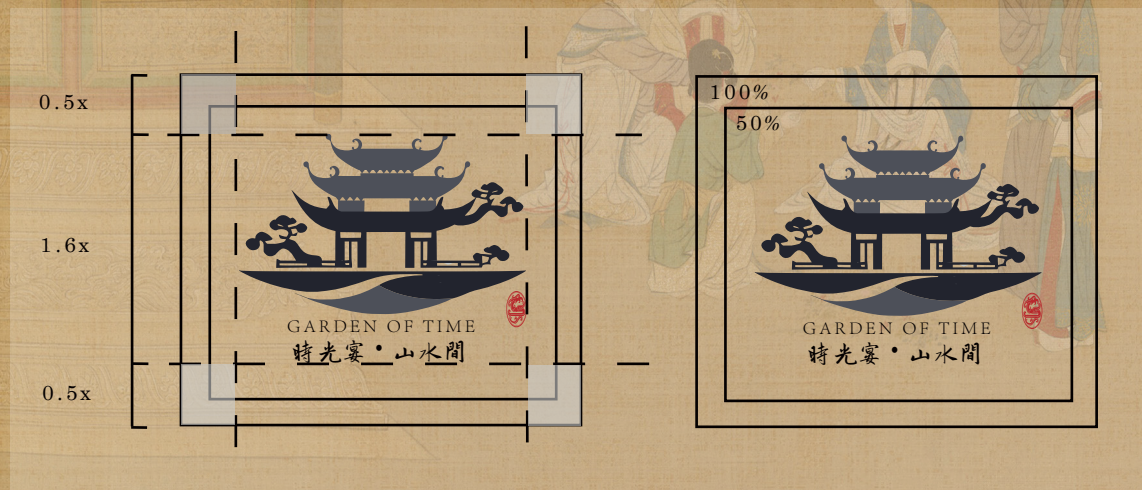
!"£\$%^&\*()<>|.,' #;

qwertyuiopasdfghjklzxcvbnm  
QWERTYUIOPASDFGHJKLZ  
XCVBNM

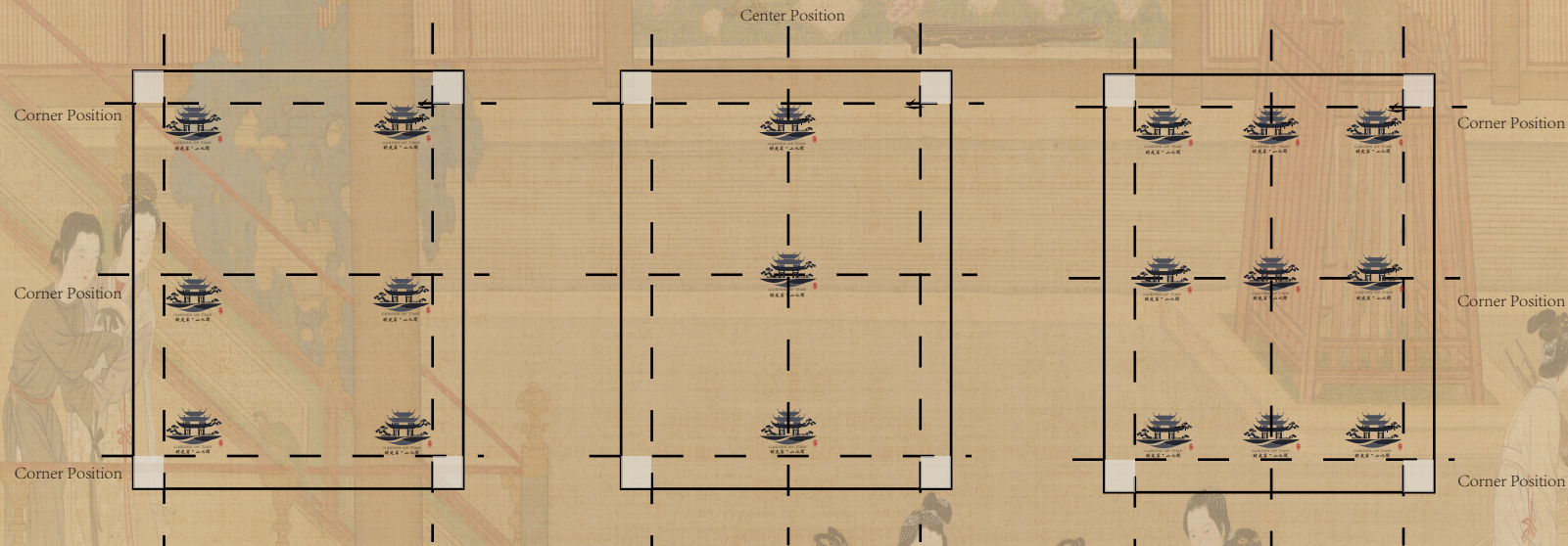
# LOGO Clear Space



To ensure that the logo is clearly visible in all applications, always maintain adequate clear space around it. This space represents the minimum distance between the logo and any other design element or text. To ensure the integrity and legibility of the logo, the area surrounding it should be protected. A clear space of 100% should be maintained but when 100% clear zone is not available, use the second option of 50% clear space.

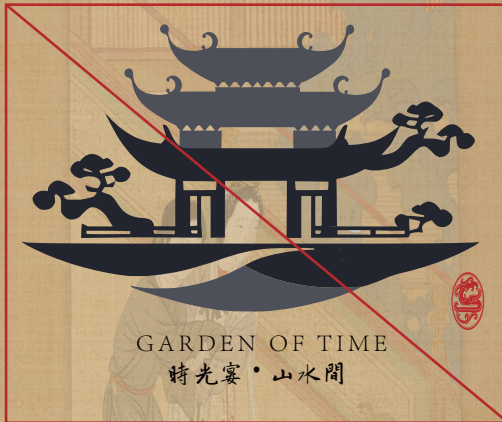


# LOGO Placement

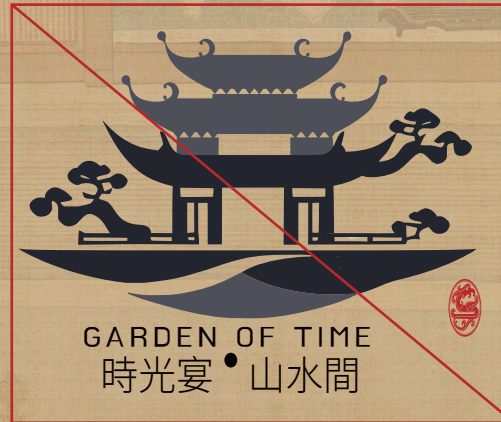


The preferred logo placement is differentiated by the logo format. The basic logo is positioned left aligned or right aligned at the top, middle or bottom of the page when the identification of the brand is the priority. For example, this would be applied on most stationery system. Vertical logo is positioned center aligned at the top middle or bottom of the page. Symbol is positioned left aligned, center aligned or right aligned at the top, middle or bottom of the page.

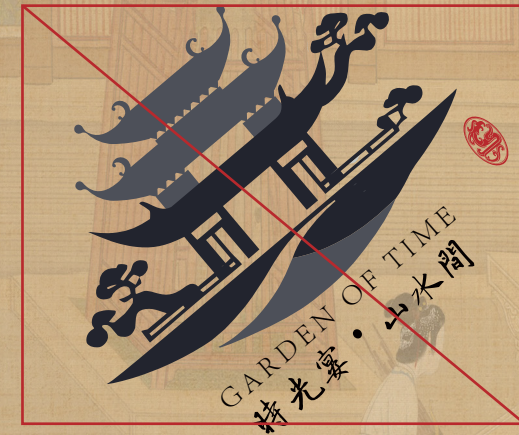
# LOGO Restrictions



Don't change proportions.



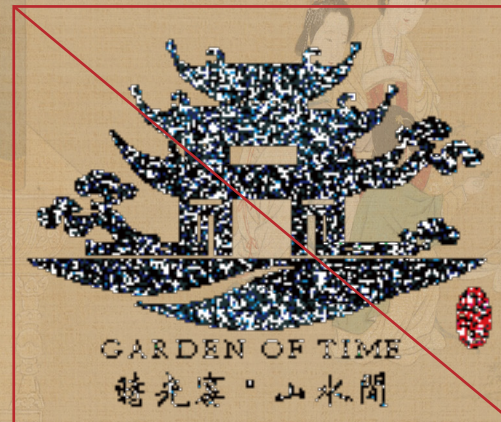
Don't change the logotype.



Don't rotate the logo.



Don't change the logo's details.

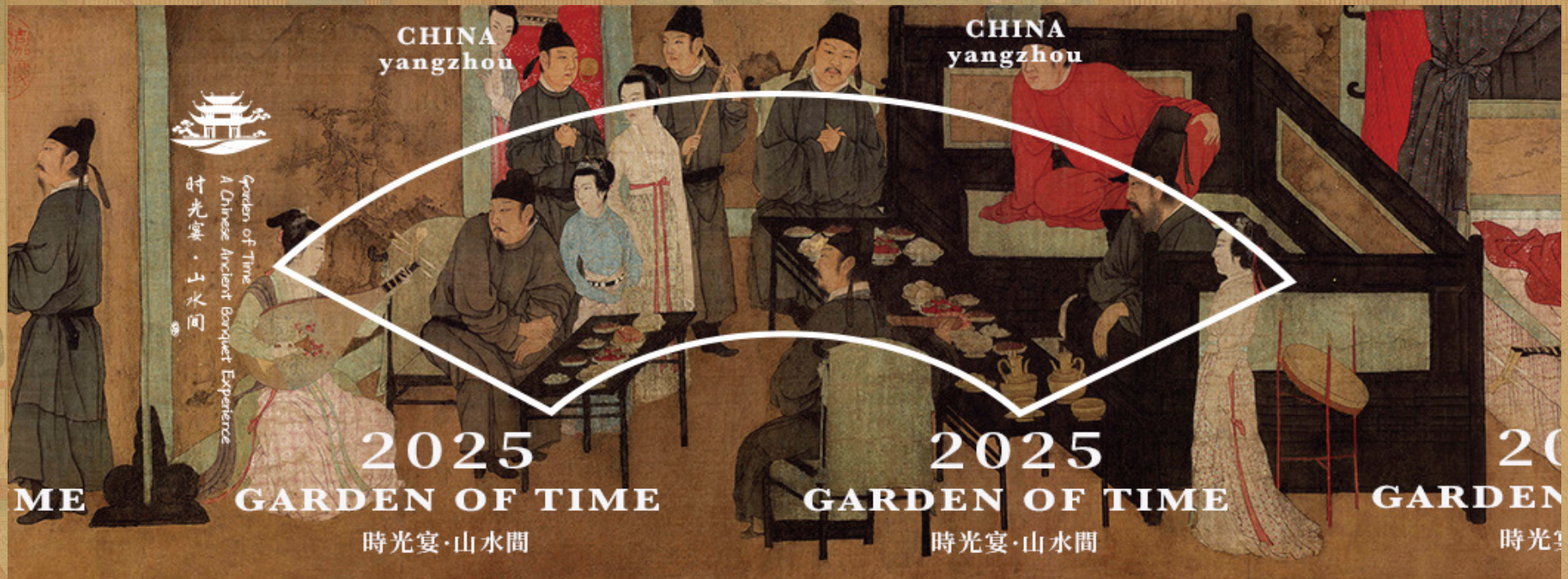


Don't use the logo in a low quality.



Don't compress the logo.

# horizontal design



Size: 1280 x 720 pixels  
Format: PNG  
Resolution: 72 DPI  
Colour Mode: RGB  
Compression: lossless  
Software: Photoshop & Illustrator

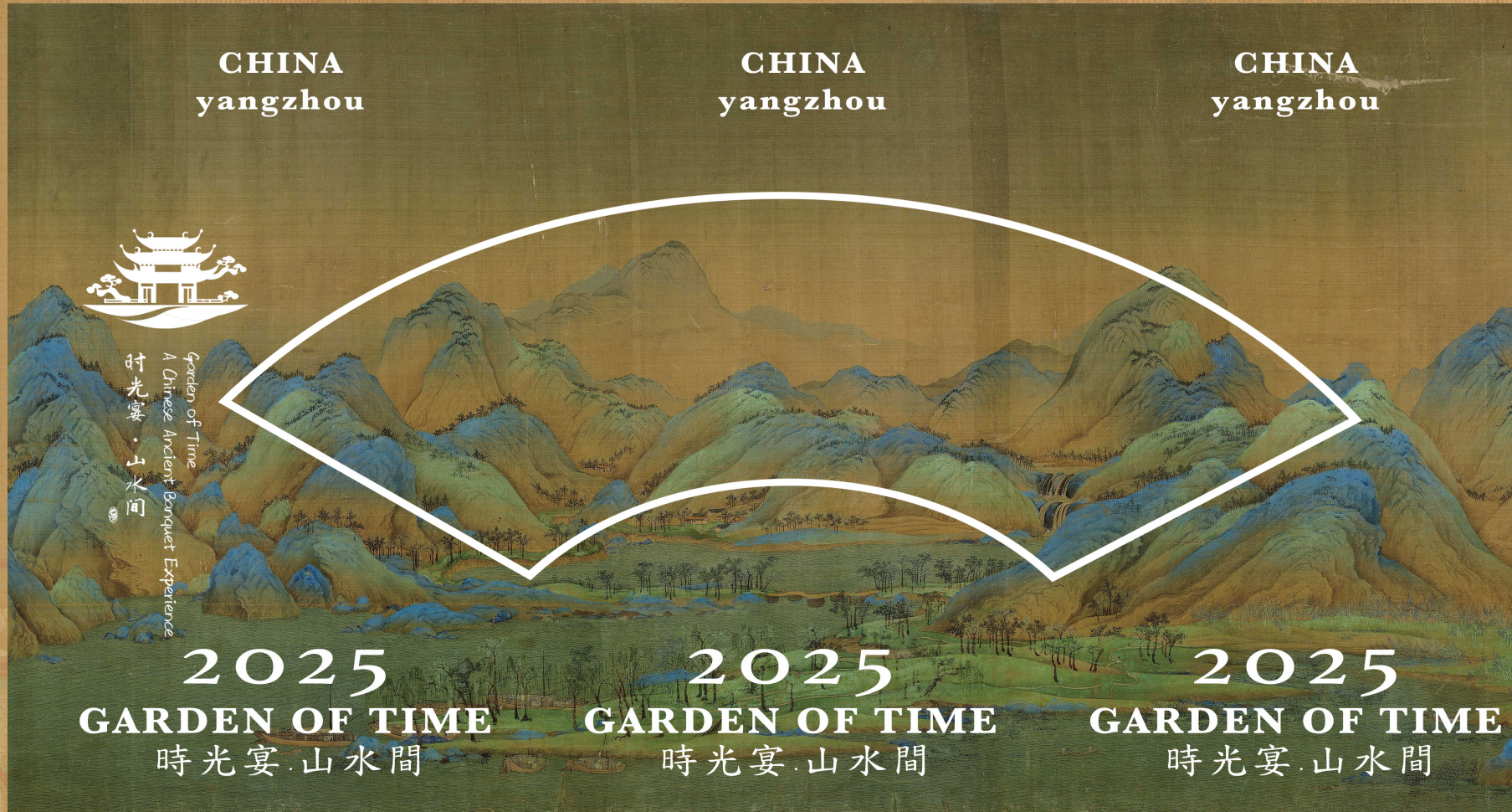


**usage: propaganda poster or other design**

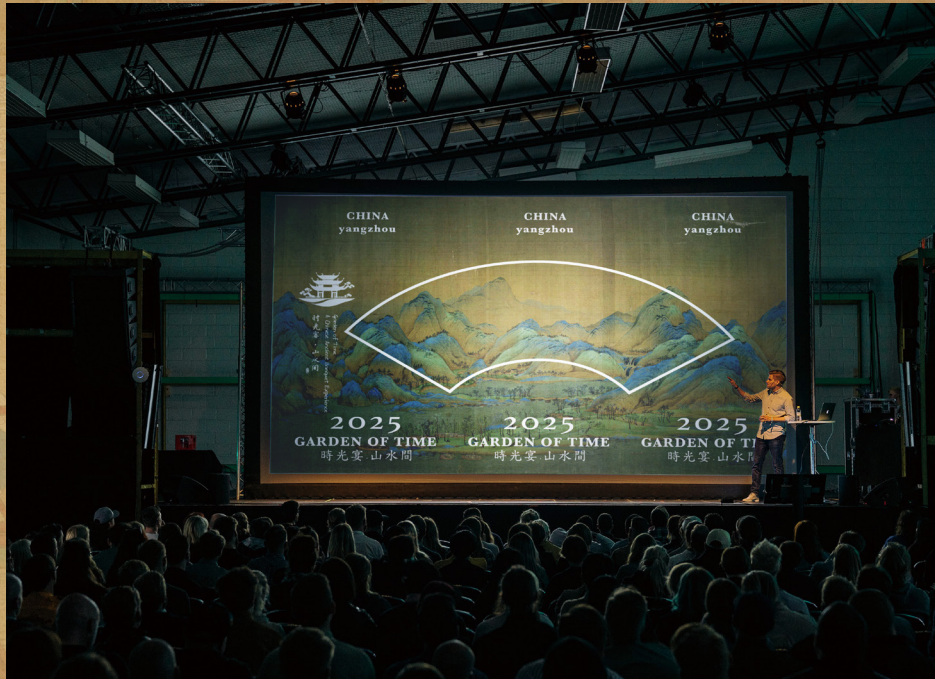
GARDEN  
OF TIME

YANGZHOU  
CHINA

GARDEN  
OF TIME



Size: 3840 x 2160 pixels  
Format: PNG  
Resolution: 72 DPI  
Colour Mode: RGB  
Compression: lossless  
Software: Photoshop & Illustrator



**usage: propaganda poster or other design**

GARDEN  
OF TIME

YANGZHOU  
CHINA

GARDEN  
OF TIME



CHINA  
YANGZHOU  
03.03



Size: 3840 x 2160 pixels  
Format: PNG  
Resolution: 72 DPI  
Colour Mode: RGB  
Compression: lossless  
Software: Photoshop & Midjourney (AI production)

GARDEN  
OF TIME

YANGZHOU  
CHINA

GARDEN  
OF TIME



**usage: propaganda poster or other design**

GARDEN  
OF TIME

YANGZHOU  
CHINA

GARDEN  
OF TIME



**usage: propaganda poster or other design**

GARDEN  
OF TIME

YANGZHOU  
CHINA

GARDEN  
OF TIME

**2025**  
**GARDEN OF TIME**  
時光宴·山水間

**CHINA**  
**X**  
**YANGZHOU**

**03.03** 週日  
Sunday  
乙巳年 2025

Unprecedented  
Large Immersive Experience

Garden of Time  
A Chinese Ancient Banquet Experience  
時光宴·山水間

Size: 3840 x 2160 pixels

Format: PNG

Resolution: 72 DPI

Colour Mode: RGB

Compression: lossless

Software: Photoshop & Illustrator & Midjourney (AI production)

GARDEN  
OF TIME

YANGZHOU  
CHINA

GARDEN  
OF TIME



**2025**  
**GARDEN OF TIME**  
時光宴·山水間

**CHINA**  
X  
**YANGZHOU**

**03.03** 週日  
Sunday  
乙巳年 2025

Unprecedented  
Large Immersive Experience

Garden of Time  
A Chinese Ancient Banquet Experience  
時光宴·山水間

Size: 3840 x 2160 pixels

Format: PNG

Resolution: 72 DPI

Colour Mode: RGB

Compression: lossless

Software: Photoshop & Illustrator & Midjourney (AI production)

GARDEN  
OF TIME

YANGZHOU  
CHINA

GARDEN  
OF TIME



Size: 3840 x 2160 pixels

Format: PNG

Resolution: 72 DPI

Colour Mode: RGB

Compression: lossless

Software: Photoshop & Illustrator & Midjourney (AI production)



**usage: poster**

2025  
GARDEN OF TIME  
时光宴·山水间

# INVITATION

TIME  
5P.M. | 3.3.2025  
ADDRESS  
YANGZHOU



Garden of Time  
A Chinese Ancient Banquet Experience  
时光宴·山水间

SINCERE INVITE  
YOUR ARRIVAL

2025  
GARDEN OF TIME  
时光宴·山水间

# INVITATION

TIME  
5P.M. | 3.3.2025  
ADDRESS  
YANGZHOU



Garden of Time  
A Chinese Ancient Banquet Experience  
时光宴·山水间

“invitation”

Size: 1200 x 1800 pixels  
Format: PNG  
Resolution: 72 DPI  
Colour Mode: RGB  
Compression: lossless  
Software: Photoshop & Illustrator



**usage: invitation**

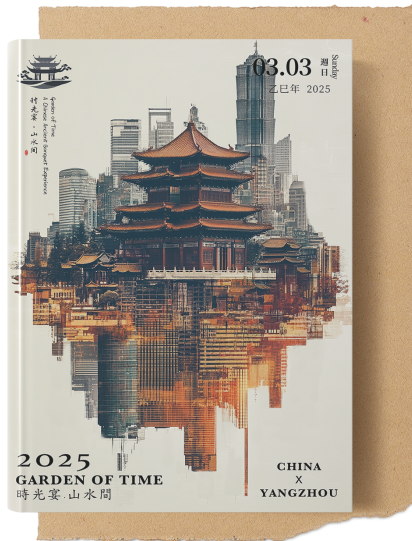


Size: 2480 x 3508 pixels  
Format: PNG  
Resolution: 72 DPI  
Colour Mode: RGB  
Compression: lossless  
Software: Photoshop & Illustrator

GARDEN  
OF TIME

YANGZHOU  
CHINA

GARDEN  
OF TIME



**usage: Posters and merchandise**

CHINA  
YANGZHOU  
**03.03** | Sunday  
乙巳年 2025

**GARDEN OF TIME  
AN ANCIENT BANQUET  
AMID NATURE**

His lessening sail is lost in the boundless blue sky;  
Where I see but the endless River rolling by.

煙花三月下揚州

GARDEN OF TIME  
時光宴·山水間

**A CHINESE ANCIENT  
BANQUET EXPERIENCE**

CHINA  
YANGZHOU  
**03.03** | Sunday  
乙巳年 2025

**GARDEN OF TIME  
EXPERIENCE ANCIENT  
CHINESE TRADITIONS**

Challenge your mind with Go,  
the ancient Chinese strategy game,  
and explore its timeless philosophy.

Go Chess  
Experience

Traditional Chinese  
Instrument Performance

Enjoy the soothing melody of  
ancient instruments like the guqin,  
experiencing the tranquility of  
the past.

Poetry and Painting  
Appreciation

Compose or recite classic  
Chinese poetry while admiring  
traditional ink paintings,  
immersing yourself in ancient artistry.

GARDEN OF TIME  
時光宴·山水間

**A CHINESE ANCIENT  
BANQUET EXPERIENCE**

CHINA  
YANGZHOU  
**03.03** | Sunday  
乙巳年 2025

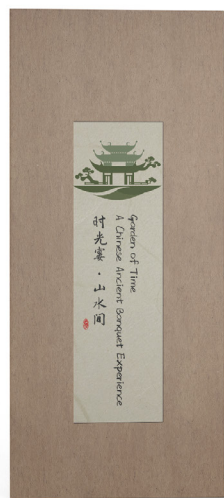
**GARDEN OF TIME  
A CULINARY JOURNEY  
THROUGH TIME**

Discover dishes inspired by  
centuries of tradition  
We have prepared some traditional  
Yangzhou cuisine for you.

GARDEN OF TIME  
時光宴·山水間

**A CHINESE ANCIENT  
BANQUET EXPERIENCE**

Size: 1052 x  
398 pixels  
Format: PNG  
Resolution: 72  
DPI  
Colour Mode:  
RGB  
Compression:  
lossless  
Software:  
Photoshop &  
Illustrator



**usage: mobile phone advertising or Brochures**

# Desktop Website



Size: 2880 x  
7944pixels  
Format: PNG  
Resolution: 72  
DPI  
Colour Mode:  
RGB  
Compression:  
lossless  
Software:  
Photoshop &  
Illustrator

## Desktop Website



Appreciation of poetry,  
enjoyment of paintings



traditional musical  
instrument performances

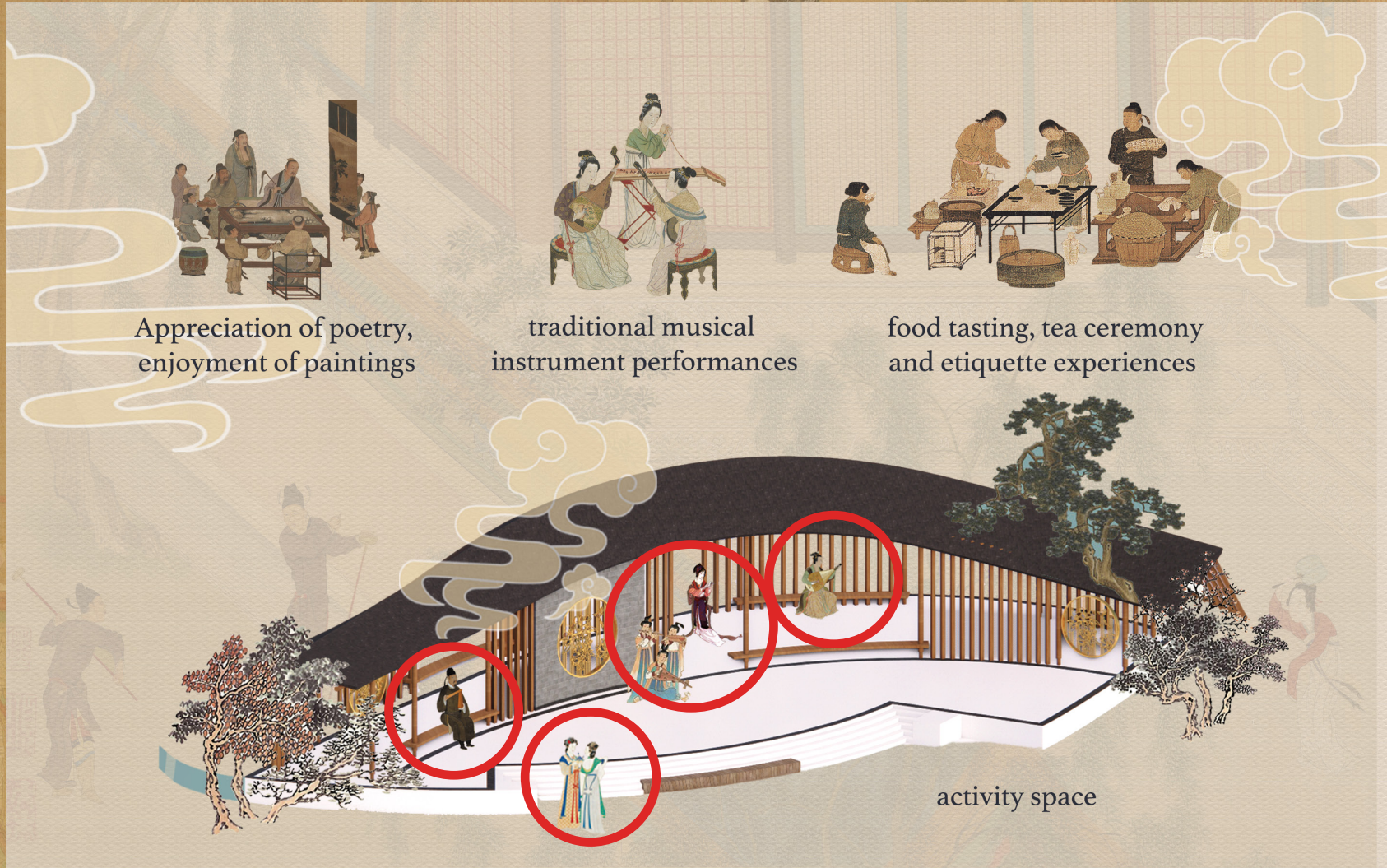


food tasting, tea ceremony  
and etiquette experiences



activity space

Size: 2880 x  
7944 pixels  
Format: PNG  
Resolution: 72  
DPI  
Colour Mode:  
RGB  
Compression:  
lossless  
Software:  
Photoshop &  
Illustrator



Appreciation of poetry,  
enjoyment of paintings

traditional musical  
instrument performances

food tasting, tea ceremony  
and etiquette experiences

activity space



Users can interact with these characters by clicking on them, and they will respond with appropriate actions or sounds.

## Desktop Website

### TICKETS & PARTICIPATION



#### FAMILY TICKET

All banquet event tickets include two adults and two children.



#### ORDINARY TICKETS

The event ticket includes one adult ticket.



#### VIP EXPERIENCE TICKETS

VIP tickets for the banquet events (with privileges such as early admission, a full set of peripheral products as gifts, and interaction with NPCs, etc.)

If the reservation is successful, an invitation letter will be issued to you. You can enter with the invitation letter.

Size: 2880 x  
7944pixels  
Format: PNG  
Resolution: 72  
DPI  
Colour Mode:  
RGB  
Compression:  
lossless  
Software:  
Photoshop &  
Illustrator

## Desktop Website



### LARGE-SCALE IMMERSIVE BANQUET EXPERIENCE

Size: 2880 x  
7944pixels  
Format: PNG  
Resolution: 72  
DPI  
Colour Mode:  
RGB  
Compression:  
lossless  
Software:  
Photoshop &  
Illustrator



時光宴·山水間  
GARDEN OF TIME

### CONTACT

Press: [Press@gardenoftime.com](mailto:Press@gardenoftime.com)

Business: [business@gradenoftime.com](mailto:business@gradenoftime.com)

Other: [enquire@thebeach.com](mailto:enquire@thebeach.com)

### SUBSCRIBE

What updates by email?

# Desktop Website





# GARDEN OF TIME

# YANGZHOU CHINA

# GARDEN OF TIME



## Reference list:

Anonymous. 1723–1735. *The Twelve Months Leisure Activities of Emperor Yongzheng*. [Handscroll, ink and color on silk]. At:Place:Palace Museum, Beijing.

Anonymous. Ming Dynasty. *Ming Xuanzong Xing Le Tu Juan (Imperial Portrait of Emperor Xuānzong at Leisure)*. [Handscroll, ink and color on silk]. Palace Museum, Beijing.

Anonymous. Shang dynasty (ca. 1600 - ca. 1050 BCE). Ritual wine ewer (gong) with masks (taotie), dragons, and real animals. [bronze].

Bowry, J. 2013. *Telephone boxes in the snow*. [Online]. [Accessed 10 May 2017]. Available from: <http://www.flickr.com/>

Chen, M. Qing Dynasty. *Yue Man Qing You Tu Ce (Elegant Excursions Under the Moon)*. [Album of 12 leaves, ink and color on silk]. Palace Museum, Beijing.

Deckner, A. 2024. *What is 3D scanning? basics and applications, Sculpteo*. [Online]. [Accessed 16 November 2024]. Available from: <https://www.sculpteo.com/en/3d-learning-hub/basics-of-3d-printing/what-is-3d-scanning/>

Greenough H. 1840. *George Washington*. [Sculpture]. At: Place: Smithsonian American Art Museum.

Gu, H. 10th century. *Night Revels of Han Xizai*. [Handscroll, ink and color on silk]. At:Place:Palace Museum, Beijing.

H.N. White Company. 1893. *Alto saxophone owned and played by Charlie Parker*. [saxophones]. At: Place: National Museum of African American.

Jingdezhen ware. 1662. *Beaker-shaped vase, from a five-piece garniture*. [China].

Louvre Museum. 2021. *The Mona Lisa in virtual reality in your own home*. Louvre Museum Official Website.

North American Rockwell. 1969. *Apollo 11 Command Module Columbia*. [Aluminum alloy, Stainless steel, Titanium]. At: Place: National Air and Space Museum Collection.

Qiu, Y. 16th century. *Han Gong Chun Xiao Tu (Spring Morning in the Han Palace)*. [Handscroll, ink and color on silk]. At:Place:Liaoning Provincial Museum.

## Reference list:

Qiu, Y. Ming Dynasty. *Tao Hua Yuan Tu Juan (Peach Blossom Spring Scroll)*. [Handscroll, ink and color on silk]. Palace Museum, Beijing.

Recker, J. 2022. smithsonian magazine. *Why Archaeologists Virtually Reconstructed an Ancient House in Pompeii*. [Online]. 1 April. [Accessed 1 December 2024]. Available from: <https://www.smithsonianmag.com/smart-news/why-archaeologists-virtually-reconstructed-an-ancient-house-in-pompeii-180979857/>

Sanxingdui Museum. 2022. *Bronze Mask from Sanxingdui Culture*. [Photograph]. Available at: <https://www.sxdmuseum.com/images> (Accessed: 15 December 2024).

Skeleton. 1952. *Mammuthus primigenius*. [Complete Skeleton].

Wadowsky, L. 2022. Product Reviews. 02 December. *Turn your phone into a portable 3D laser color scanner with ASCAND 3D*. [Online]. [Accessed 11 November 2024]. Available from: <https://thegadgetflow.com/blog/turn-your-phone-into-a-portable-3d-laser-color-scanner-with-ascand-3d/>

Wang, X. 1113. *A Thousand Li of Rivers and Mountains*. [Handscroll, ink and color on silk]. At:Place:Palace Museum, Beijing.

Wikipedia. 2018. *Museu Nacional*. [Twitter]. [Accessed 10 November 2024]. Available from: <https://x.com/Wikipedia/status/1037066123869483008>

Yuanhua, G. 2018. *Museum fire in Brazil*. [Online]. [Accessed 10 November 2024]. Available from: <https://www.hk01.com/>

Zhang, Z. 12th century. *Along the River During the Qingming Festival*. [Handscroll, ink and color on silk]. At:Place:Palace Museum, Beijing.